

Viridian Canopy

582405

Agricultural structures are often purely functional objects. The Viridian Canopy seeks to bridge the gap between the utilitarian chicken coop and the sculptural object. The design explores the tension between solidity and void with a simple gesture: a compact, monolithic volume lifted above the ground. Elevating the living space separates it from the terrain, protecting the birds from predators while creating a shaded canopy beneath.

At its core, the design reinterprets the familiar gable roof form. Exaggerated in scale, it establishes a clear silhouette and deep overhangs that shelter the structure from the elements. The timber exterior is finished in a viridian oil based stain, allowing the coop to recede into the landscape during the summer months and emerge as a vivid object against the winter fields. Set on rammed earth plinths, the wooden volume appears to hover lightly above the ground, balancing presence with restraint. A standard 40 × 90 mm insulated wood structure is used for the walls, floor, and roof, allowing for material efficiencies. Marine grade plywood siding and roofing, along with a perforated wood vent at the gable apex, ensure durability, airflow, and comfort.

Inside, the space becomes more intimate, with six nesting boxes tucked into the back of the shelter, providing a dark and private area. A rope wrapped roosting bar is positioned above a droppings shelf with removable trays, integrating an efficient maintenance strategy. A floor hatch opens the interior to the ground below, simplifying cleaning and material replacement. Additionally, storage space is created by enclosing the area between two of the concrete plinths. This enclosed space serves not only as storage for tools and feed but also as structural support for the wooden structure. The interior is finished with a clear coat on marine grade plywood, contrasting with the viridian stained exterior and marking a shift from outward expression to inner utility, a contrast most apparent when the large sliding barn doors are opened.

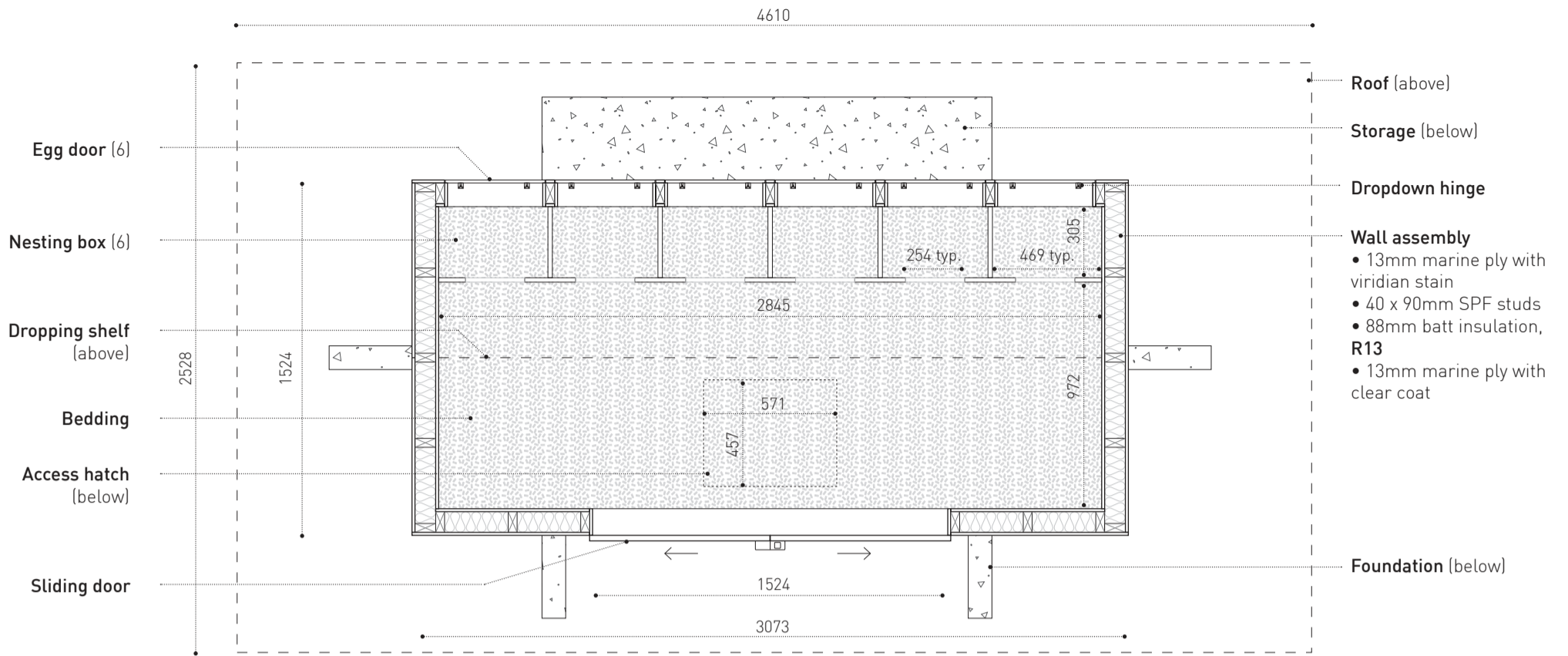
Through the balance between solidity and void, the Viridian Canopy transforms the modest chicken coop into an architectural composition, where solid and void are equally essential to its performance and presence.



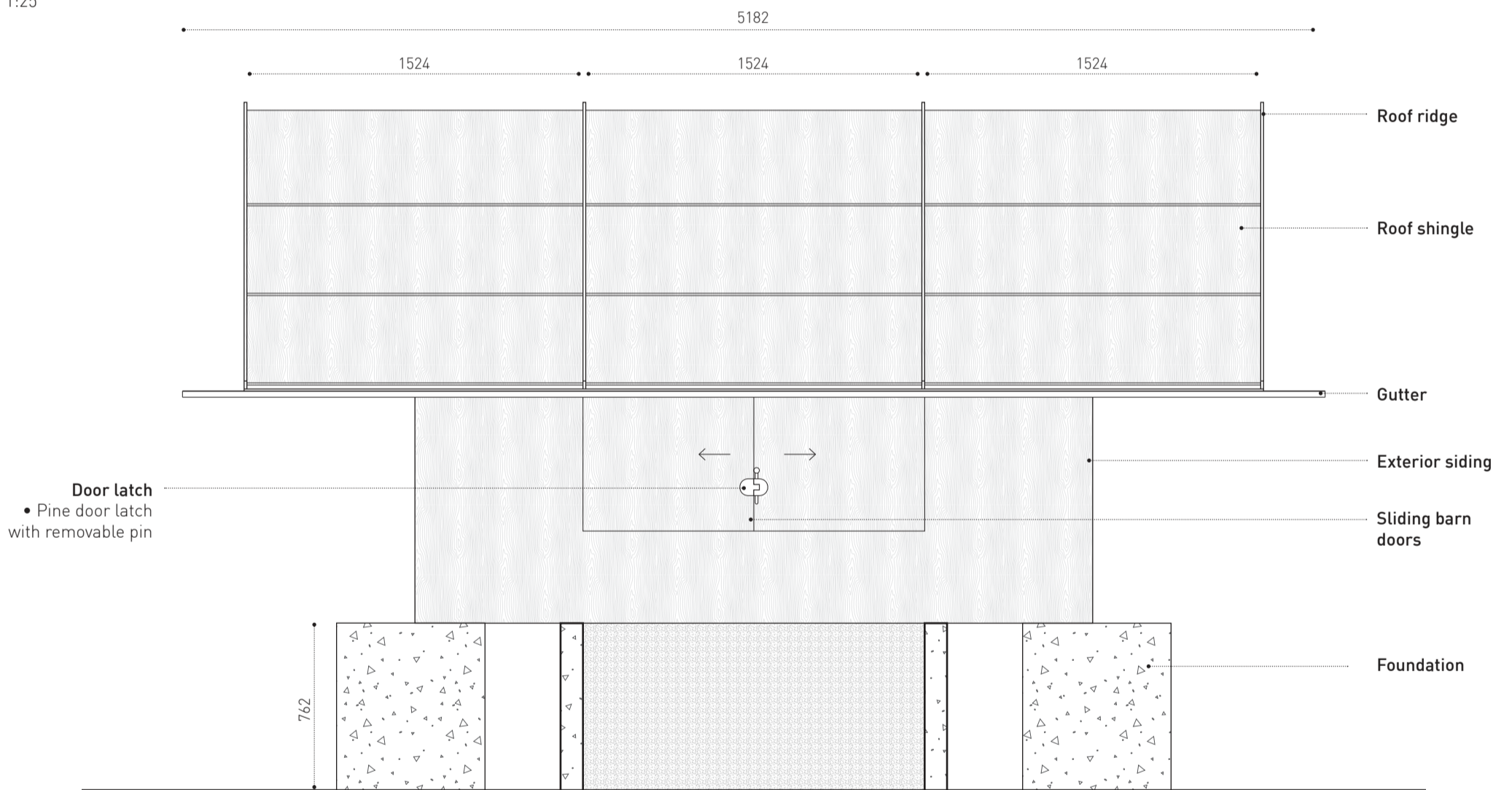
Site plan N
1:200



582405



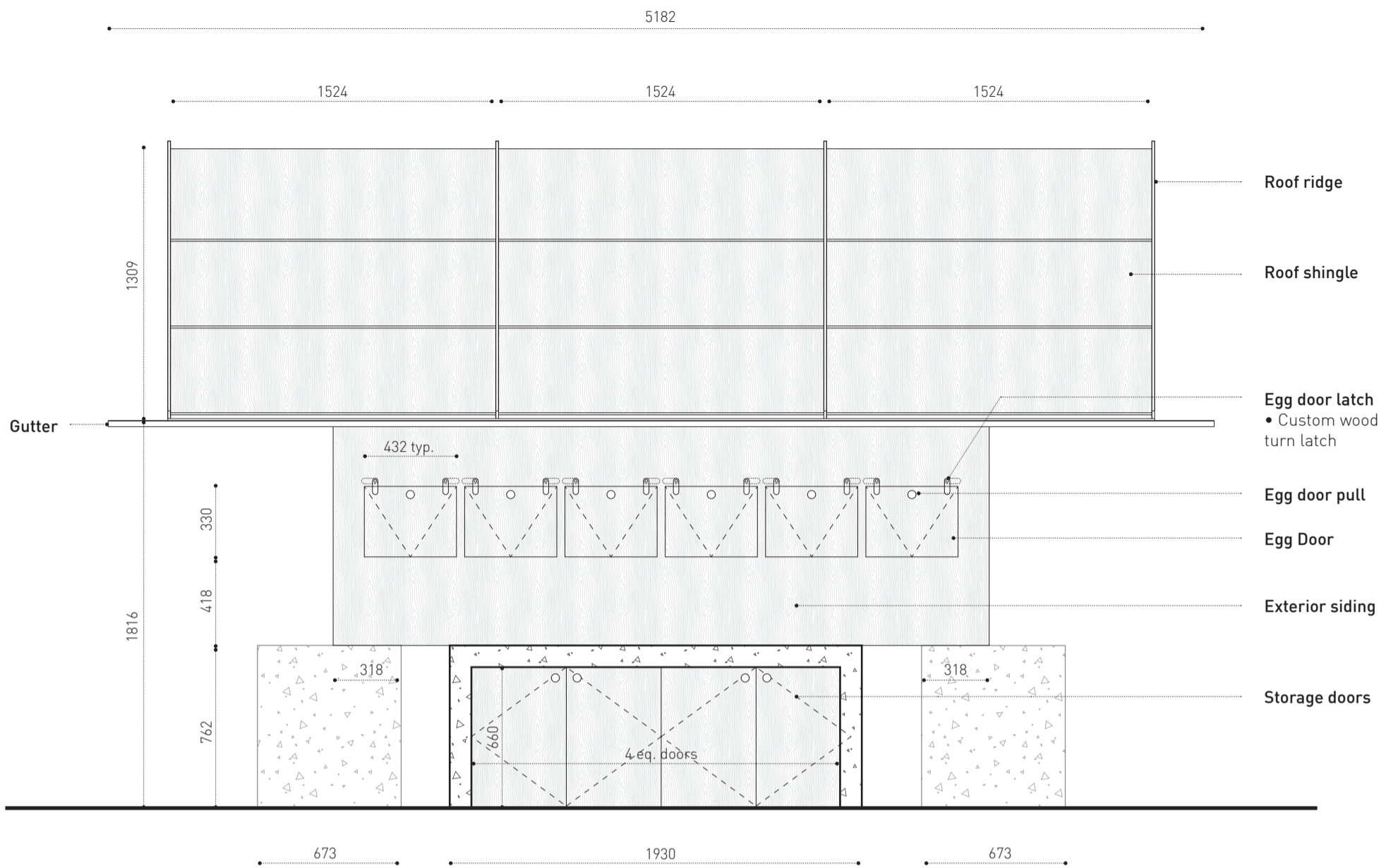
Plan
1:25



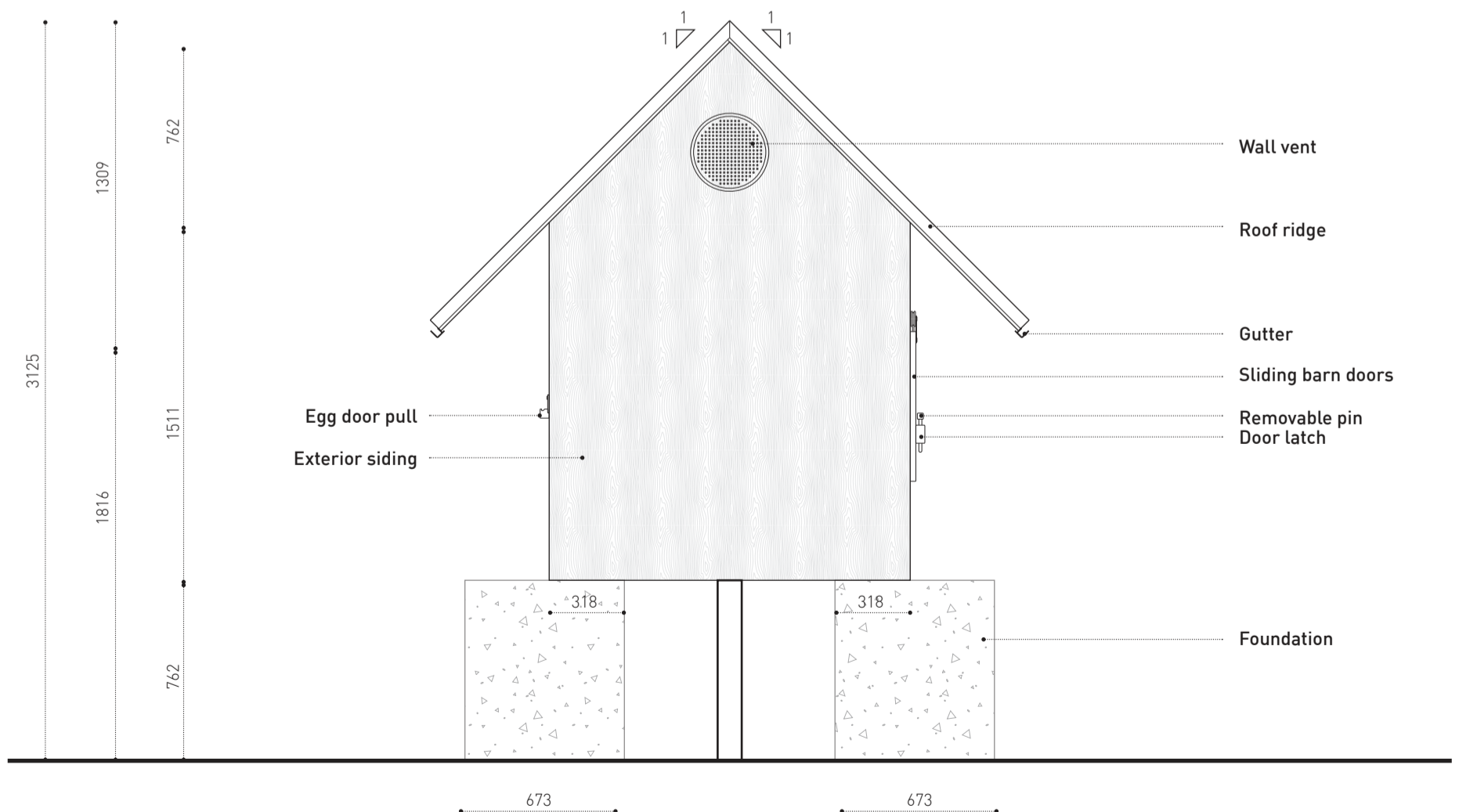
Front elevation
1:25

Dimensions shown in mm, unless otherwise noted

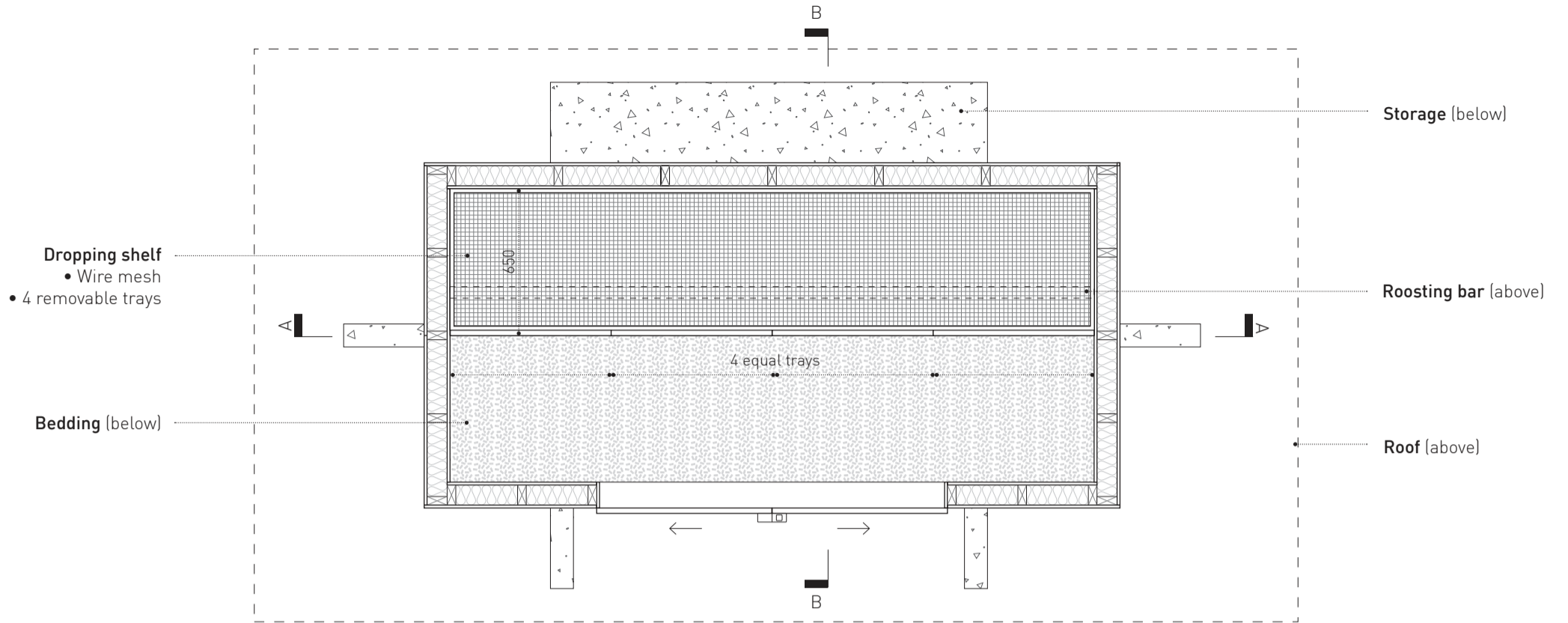




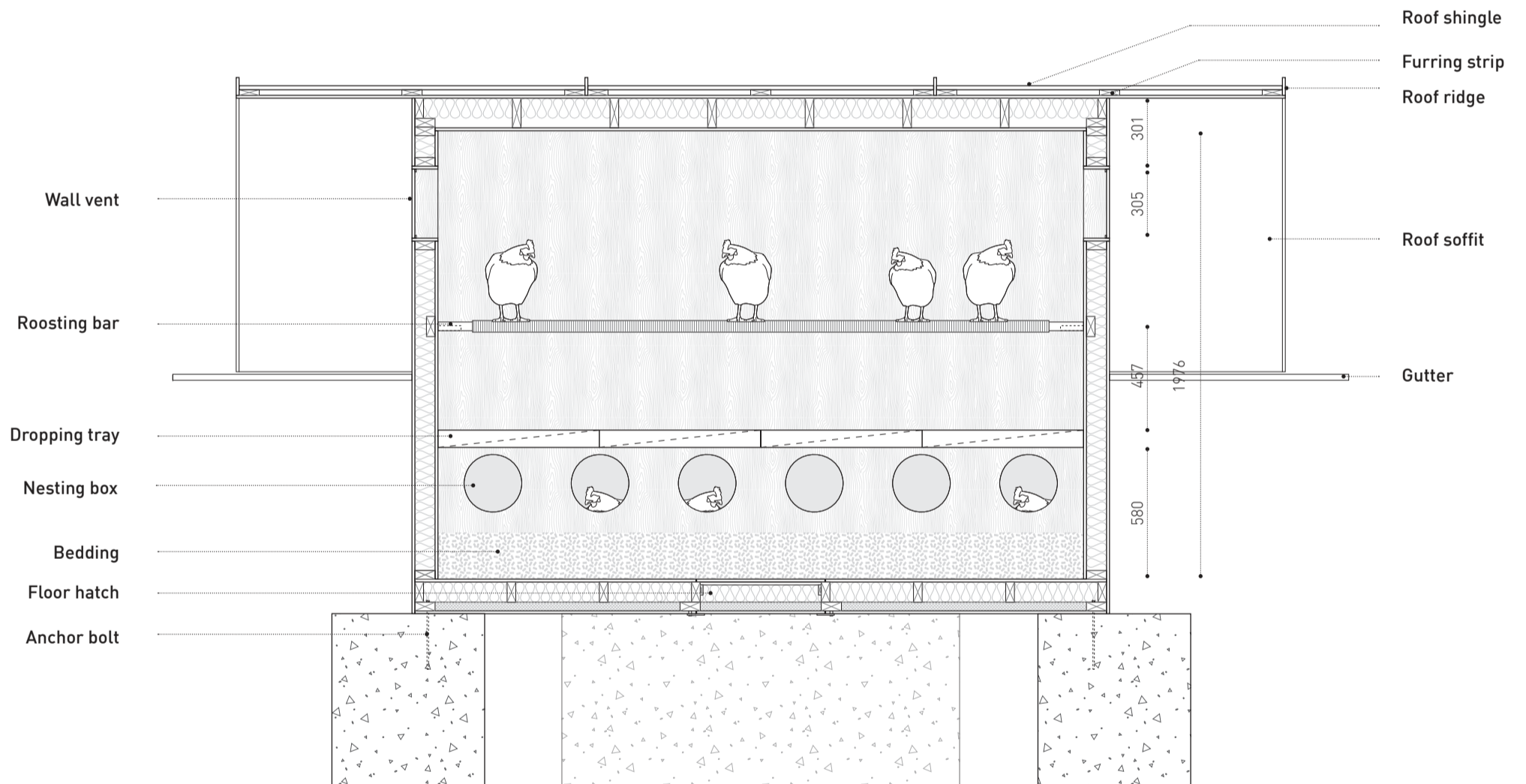
Back elevation
1:25



Left and Right elevation
1:25



Mezzanine Plan
1:25



Dimensions shown in mm, unless otherwise noted



