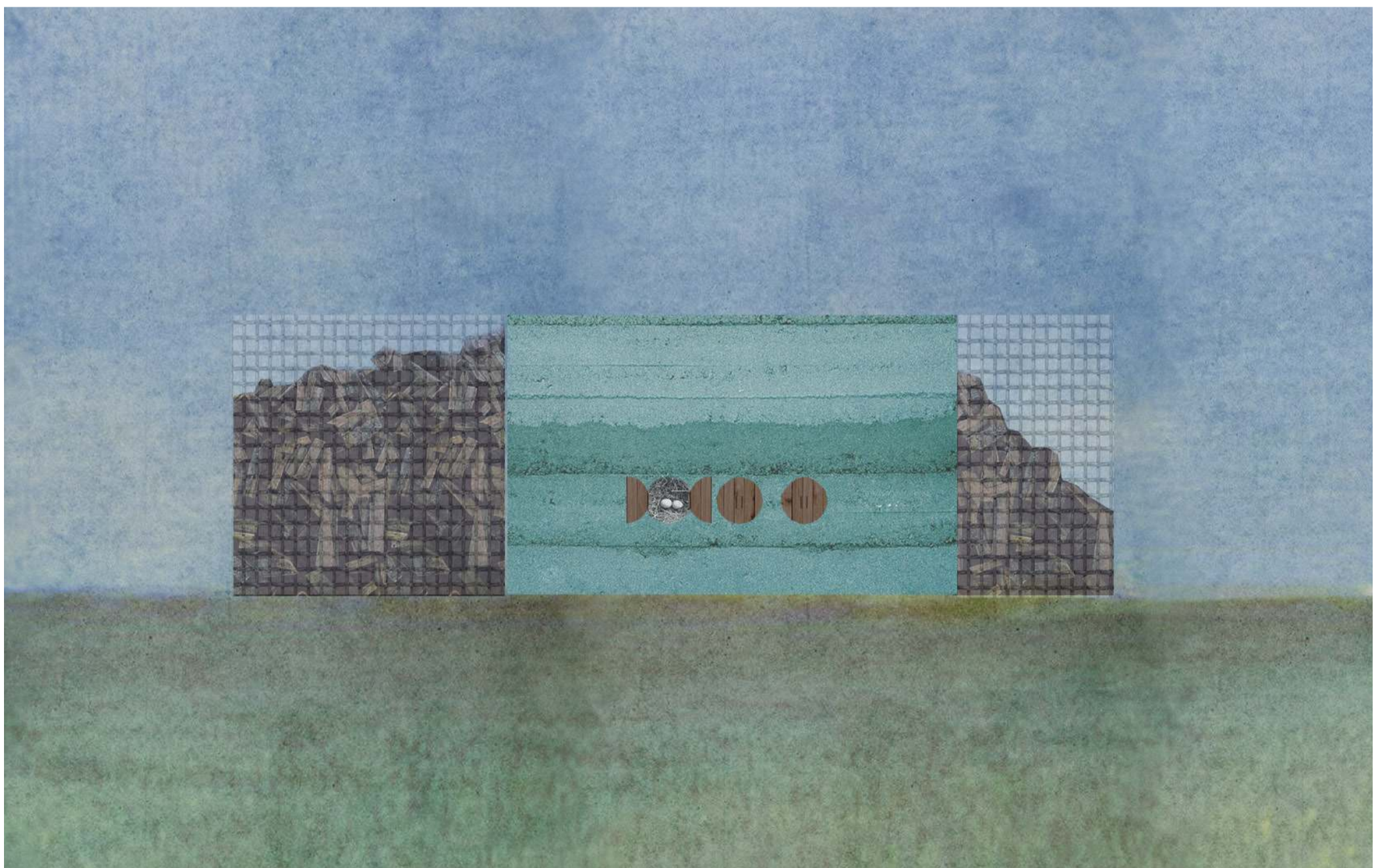
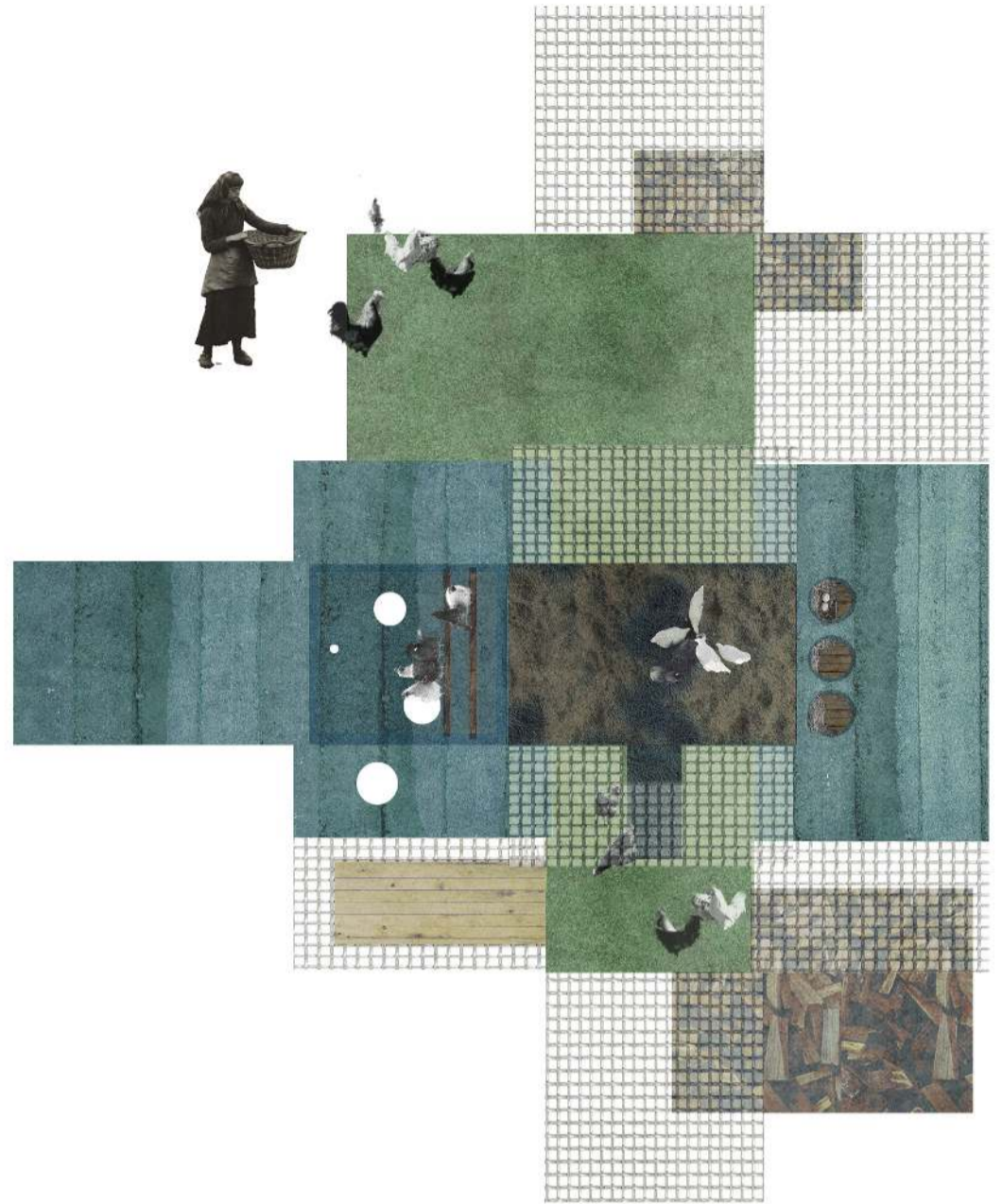
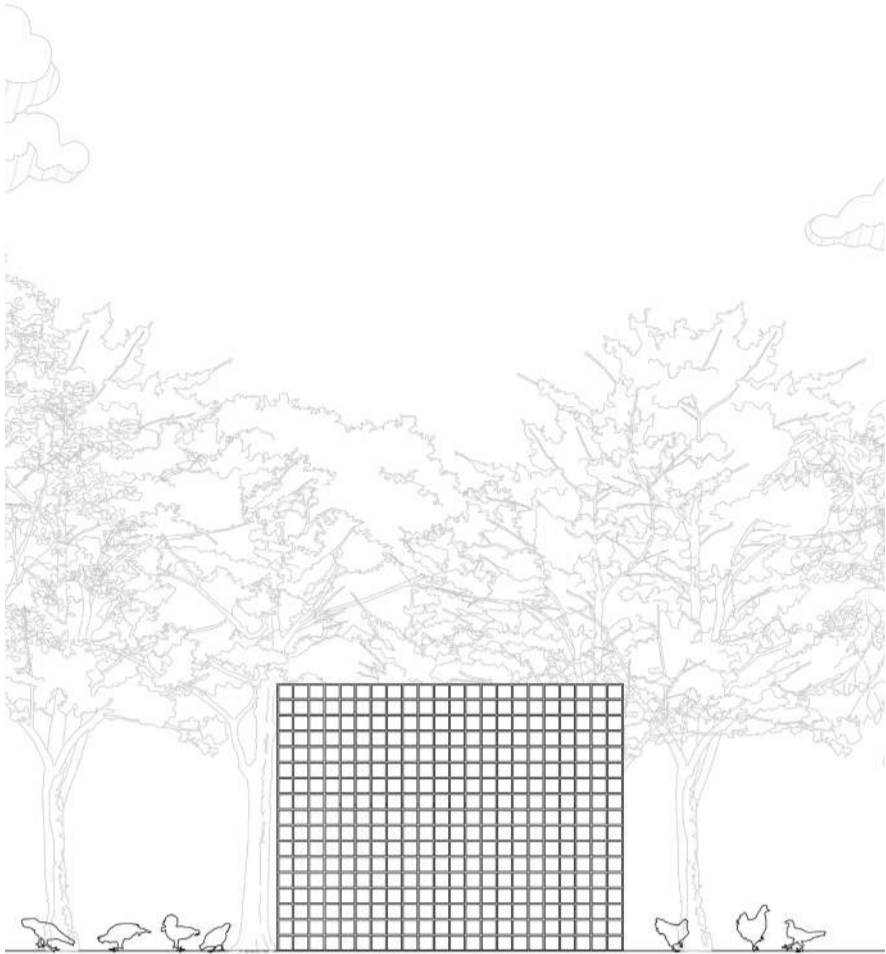


Architecture often speaks loudly when it addresses humans and quietly when it shelters animals. Earthed Coop reverses this hierarchy. It proposes a space where the hen is not an instrument of production but the protagonist of a carefully constructed micro-architecture. The project begins from a clear intention: to provide comfort, protection, and dignity for the hens while reducing human intervention to what is strictly necessary. The coop is conceived not as a utilitarian object but as a small, precise building that expresses a relationship to soil, climate, and everyday ritual.

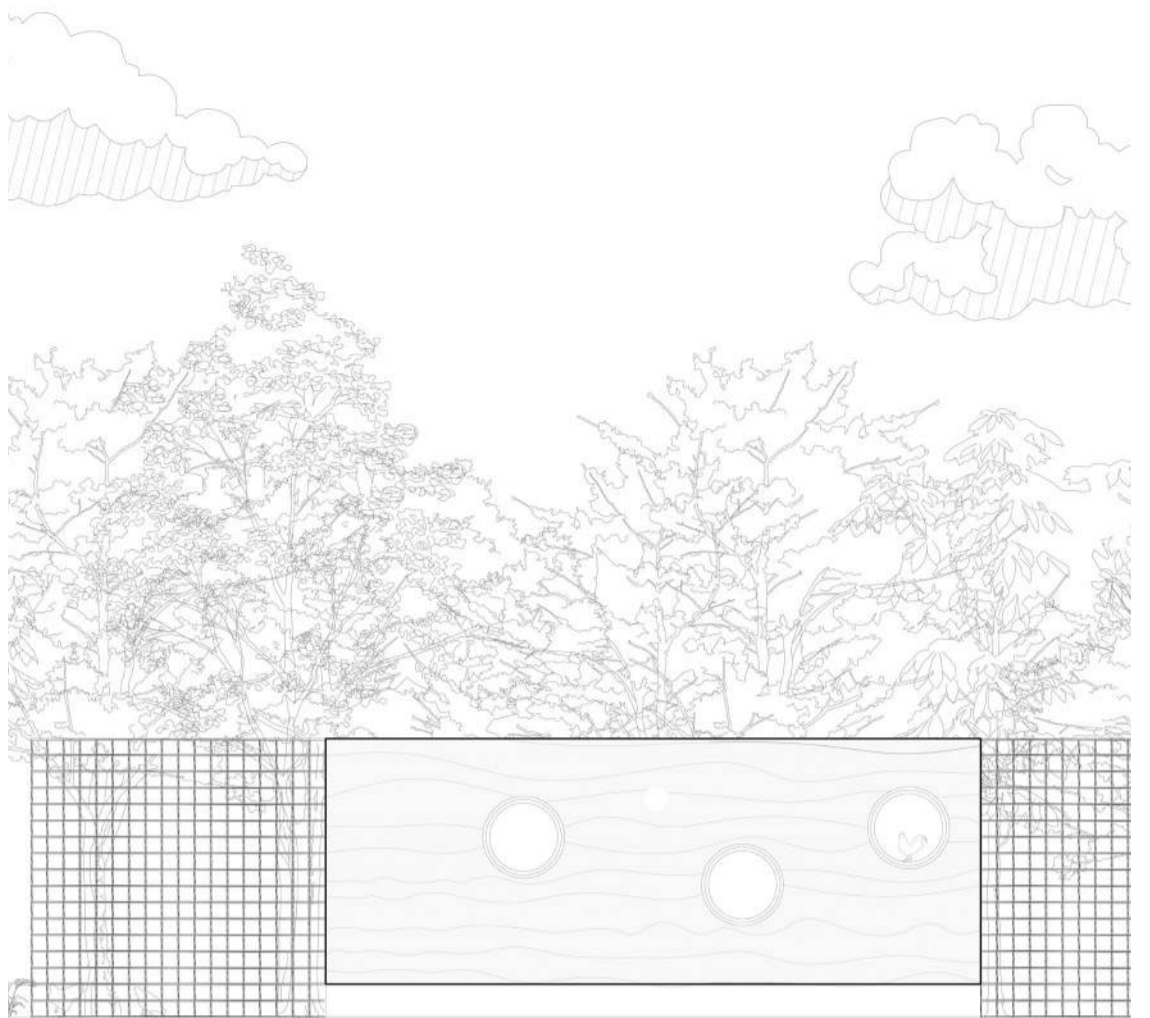
Located in Dobrava pri Škocjanu, within the clearing of the clustered farmstead, the project responds directly to its environmental and architectural context. The site opens toward the southeast, receiving consistent daylight, while colder winter winds predominantly arrive from the north and northeast. Two parallel rammed earth walls are positioned along these exposed edges, forming a protective thermal spine and anchoring the structure within the rural layout. The elongated form aligns with the logic of surrounding farm buildings, reinforcing the existing spatial order rather than competing with it.







FACADE 1 ESC 1/50



FACADE 2 ESC 1/50

The facade is intentionally adaptable. The density of timber inserted between the mesh layers can be adjusted over time. During colder months, particularly when northern and northeastern winds intensify, additional wood can be added to increase wind buffering and reduce exposure. In warmer seasons, sections can remain lighter, allowing greater airflow, transparency, and visual permeability. The elevation therefore evolves with climate and use, becoming a living boundary rather than a fixed surface.

The rammed earth walls rest on a shallow frost-protected foundation with a capillary break and raised plinth, preventing rising moisture and splash erosion while visually rooting the building to the soil from which it is formed. The elevated wooden platform is mechanically anchored into recessed connections within the earth walls, allowing each material to perform according to its structural logic. With the exception of the metal mesh, the coop is conceived to be constructed from soil and timber available on site. The system is simple, legible, and feasible within a workshop-based building process.

The earth is tinted with a soft mineral blue. Research in poultry welfare suggests that blue-toned environments can have calming effects and may reduce aggressive behavior. The color supports the hens' well-being while introducing a restrained chromatic contrast within the rural cluster. Against the warm yellow tones of the existing farm buildings, the blue earth reads as contemporary yet grounded.

Earthed Coop proposes that even the smallest structure deserves architectural clarity. It relies not on spectacle but on material intelligence, environmental responsiveness, and precise detailing. Rooted in the soil of Dobrava and aligned with the farm's ongoing exploration of earth construction, it stands as a modest but deliberate statement. Here, architecture becomes an act of care, and the hens inhabit a space shaped by mass, light, and ritual rather than confinement.

